



nickelodeon



PRODUCT CATALOG

2024



KANDIZ™





CONTENTS

- 14** BREAKFAST
 - 20** CHOCOLATE & BISCUITS
 - 36** SOFT & HARD CANDY
 - 43** CANDY TOYS
 - 61** SOURS
 - 66** FOOD & BEVERAGE
- 
- 



Society Where There Is Understanding

SAI Group is a well-established company with a strong focus on **product development, design, manufacturing, and distribution.**



10+
Years Experience



1000+
Product Codes



35+
Representative



40+
Countries

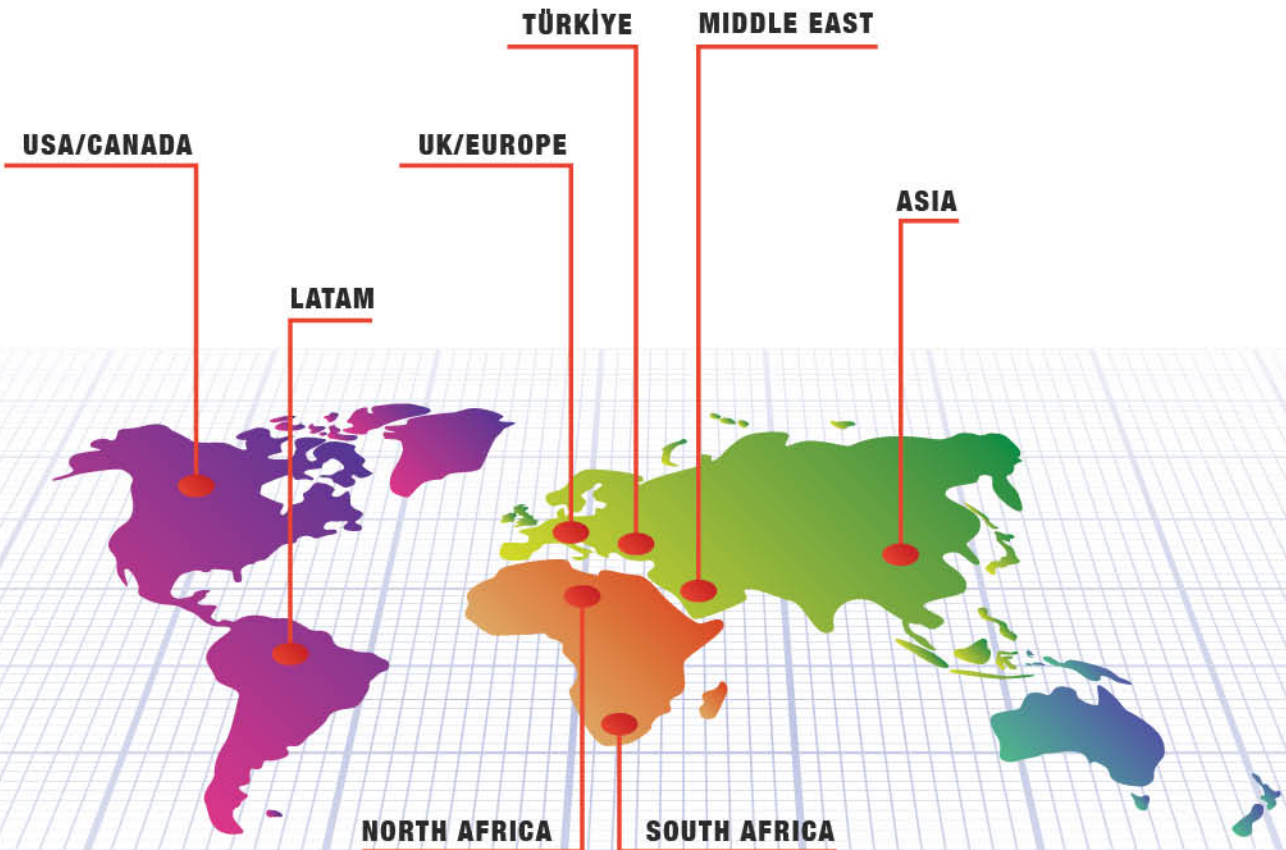


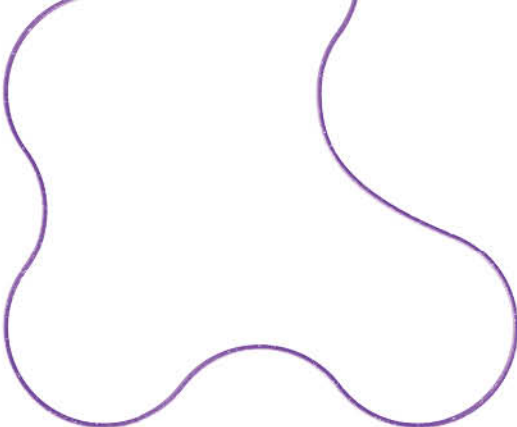
SAI Group's products have a wide reach, including large markets such as the **USA, Canada, LATAM, UK, Europe, the Middle East, Asia, Türkiye, North Africa, and South Africa.**



SAİ Group is among **the top 10 producers** of licensed children's products in the world. The company strives to become a leading producer in this industry by expanding its range of high-quality products and staying ahead of the competition

SAİ Group is a leading player in Türkiye and one of the fastest growing companies in its sector in the world. The company produces a wide range of **confectionery, candy toys, toys, stationary, and body care products.**





FROM SKETCH TO SUCCESS: Where Ideas Take Shape



Inception of Brilliance:

Refine promising ideas into conceptual designs.



Crafting the Vision:

Creating and testing.



Bringing Ideas to Life:

Develop detailed specifications for production.



Design Excellence:

Implement the design for mass production or development.



Precision in Production:

Ensure each unit meets quality standards.



Guardians of Quality:

Develop a strategy for promotion and market launch.



Unveiling the Masterpiece:

Establish distribution channels and monitor sales.



Reflection of Triumph:

Evaluate product performance and gather customer feedback.



Celebrate Every Season with Our Limited-Time Sensations!



Christmas



Halloween



Easter



Valentine



Ramadan



ISO 22000 CERTIFICATION



What you gain by buying from a certified company?

1. You supply tested product in terms of:
 - Their technical characteristics
 - The validity of the composition
 - Nutritional analysis
 - Allergens
 - Laboratory
2. You ensure the stability of the quality of your products.
3. Protect your brand and build trust with your customers.
4. You empower your business, gaining a strong advantage over the competition.

ISO 22000 certification is a valuable investment that not only ensures compliance with global food safety standards but also provides a strategic advantage in the competitive business landscape.



DISCLAIMER!

Product size, weight, and design may vary based on region and licensor approvals. Please note that certain products and characters may not be available in your region due to licensing restrictions. We strive for accuracy, but actual dimensions may slightly differ. Appearance may vary due to customization and local requirements. Please Contact our sales team for the latest information.

COPYRIGHT NOTICE

All material appearing in this Nickelodeon presentation is protected by copyright under U.S. and European Copyright laws and is the property of the party credited as the provider of the content, Viacom International Inc. You may not copy, reproduce, distribute, publish, display, perform, modify, create derivative works, transmit, or in any way exploit any such content, nor may you distribute any part of this content over any network, including a local area network, sell or offer it for sale, or use such content to construct any kind of database. You may not alter or remove any copyright or other notice from copies of the content of the Nickelodeon presentation. Copying or storing of any content except as provided above is expressly prohibited without prior written permission of the Company or the copyright holder identified in the individual content's copyright notice.



GET TO KNOW US!

At SAI Group, we stand tall as purveyors of premier children's entertainment brands, dedicated to delivering unparalleled quality and an extensive array of products adorned with the most beloved characters cherished by kids far and wide!

Our dynamic team at SAI Group is in perpetual motion, crafting innovative, kid-friendly snacks and cereal products featuring iconic cartoon characters. Our mission? To inspire healthy eating habits and provide children and parents alike with a plethora of delectable options. Ever at the forefront of licensing innovation, we tirelessly explore opportunities to distribute our products globally, championing the cause of wholesome food choices.

In our quest to conquer the global market, our licensed products take center stage in the confectionery realm. Armed with a uniquely attractive product portfolio and a world-renowned masterclass experience, we strategically position ourselves for triumph.

At the heart of SAI Group beats a state-of-the-art manufacturing marvel, ever-evolving to meet and exceed the daily global demands. From achieving soaring production targets to surpassing quality expectations, our production team undergoes training from international manufacturing maestros, employing the latest techniques and methodologies.

Rest assured, SAI Group operates in full compliance with European CE, British Standards, and proudly approved by the FDA. We uphold the strictest regulations to eradicate child labor and honor international work ethics. Furthermore, we've clinched the ISO 9001, 14001, 45001, 10002, 22000, 27001, and 8000 certificates, solidifying our commitment to excellence.

Join us in our quest for dietary and entertainment excellence – where cool meets formal, and every child's smile is our ultimate triumph!

SAI GROUP

UK CA CE FDA



BEST PRODUCT AWARD 2023





AVAILABLE AT MAJOR RETAILERS





Breakfast

Crunchiz

CLASSIC FLAKES

Flavor: Corn

Packing: 12/1 Net Weight: 375g



C24030515

Breakfast Cereals

Dimension (CTN): 370 x 370 x 302 mm

Pallet QTY (CTN): 42

CBM: 0.042

40'HQ (BULK): 1536

40'HQ (EURO/STD): 966/924



C24030521



C24030508



C24030522



C24030512



C24030502



C24030504



C24030501

Crunchiz

CHOCO POPS

Flavor: Chocolate

Packing: 12/1 Net Weight: 375g



Breakfast Cereals

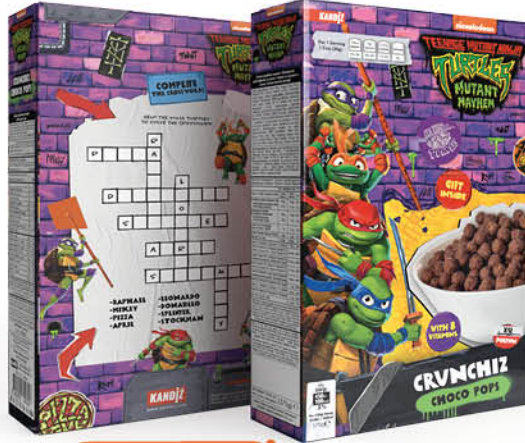
Dimension (CTN): 370 x 370 x 302 mm

Pallet QTY (CTN): 42

CBM: 0.042

40'HQ (BULK): 1536

40'HQ (EURO/STD): 966/924



C24030615



C24030621



C24030608



C24030622



C24030601



C24030602



C24030604



C24030612





Crunchiz

LOOPS N'HOOPS

Flavor: Tutti Frutti

Packing: 12/1 Net Weight: 375g



Breakfast Cereals

Dimension (CTN): 370 x 370 x 302 mm

Pallet QTY (CTN): 42

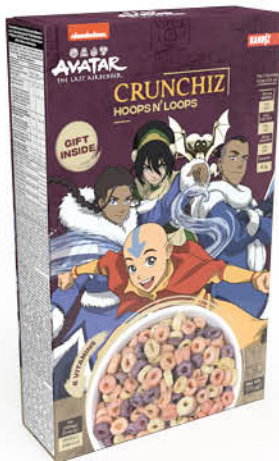
CBM: 0.042

40'HQ (BULK): 1536

40'HQ (EURO/STD): 966/924



C24030815



C24030821



C24030808



C24030822



C24030801



C24030802



C24030804



C24030812

Chookiz

Chocolate Drink Powder

Chocolate Drink Powder

Flavor: Cacao

Packing: 12/1 Net Weight: 420 g



C38042802



Dimension (CTN): 285 x 395 x 155 mm

Pallet QTY (CTN): 120

CBM: 0.018

40'HQ (EURO/STD): 2640 / 3150

PUFFY CORN

Corn Puff Snack

Flavor: Hot Cheese, Pizza, Ketchup,
Chilli Lemon & Sweet Corn

Packing: 30/9 Net Weight: 8 g



Dimension (CTN): 515 x 290 x 275 mm

Pallet QTY (CTN): 48

CBM: 0.042

40'HQ (BULK): 1683

40'HQ (EURO/STD): 1200 / 1408



PUFFED RICE Bar

Puffed Rice Bar
Flavor: Chocolate & Strawberry
Packing: 7/28 Net Weight: 22.5g



C57031408



C57031508



C57031008



C57031008

CRUNCHIZ BITES^{mini}

Flavor: Chocolate, Strawberry, Coconut & Hazelnut
Packing: 10/12 Net Weight: 100g



C06032102



C06032104



C06032108



chocolate & Biscuits

DIP N'GO

Breadsticks with Hazelnut Cocoa Spread

Flavor: Hazelnut Cream

Packing: 24/4 Stand Packing: 144/1 Net Weight: 55g



Dimension (CTN): 400 x 282 x 360 mm

Pallet QTY (CTN): 48

CBM: 0.041

40'HQ (BULK): 1680

40'HQ (EURO/STD): 1104/1104



C04040215



C04040214



C04040202



C04040222



C04040204



C04040201



C04040212



C04040208



C040402M1





C04042104



C040414M1

ALWAYS READY
FOR SEASONAL
PRODUCT



Dimension (CTN): 560 x 210 x 500 mm
 Pallet QTY (CTN): 28
 CBM: 0.059
 40'HQ (BULK): 1175
 40'HQ (EURO/STD): 644/792

FUN BITES



Dimension (CTN): 246 x 237 x 182 mm
 Pallet QTY (CTN): 180
 CBM: 0.011
 40'HQ (BULK): 6300
 40'HQ (EURO/STD): 4140/5280

Chocolate Cornet

Flavor: Chocolate
 Packing: 12/1
 Net Weight: 60g

C56041608



C09000208



Chocolate Coated Gummy

Flavor: Chocolate
 Packing: 12/1
 Net Weight: 100g

C09041808



Chocolate Coated Pretzel

Flavor: Chocolate
 Packing: 12/1
 Net Weight: 80g

C09041908



Chocolate Coated Marshmallow

Flavor: Chocolate
 Packing: 12/1
 Net Weight: 80g

C09041708



Dimension (CTN): 265 x 255 x 170 mm
 Pallet QTY (CTN): 144
 CBM: 0.012
 40'HQ (BULK): 5760
 40'HQ (EURO/STD): 3312/4224



StixMix

Flavor: Chocolate & Strawberry
 Packing: 16/6 Net Weight: 40g



**Biscuit Sticks Dipped in
 Milk Chocolate &
 Strawberry Cream**

Dimension (CTN): 522 x 425 x 165 mm
 Pallet QTY (CTN): 26
 CBM: 0.037
 40'HQ (BULK): 1824
 40'HQ (EURO/STD): 598/1144



C09040715



C09040702



C09040722



C09040708



C09040704



C09040701



CRISPINI

A Delightful Crunch
With Every Bite



Flavor: Red Hot Pepper & Thyme

C04130308



Flavor: Olives & Olive Oil

C04130108



Flavor: Parmesan Cheese

C04130208



MINI RIVERZ WAFER



Flavor: Lemon
Packing: 24/6
Net Weight: 40 g

C41131104



Flavor: Vanilla
Packing: 24/6
Net Weight: 40 g

C41131002



Flavor: Banana
Packing: 24/6
Net Weight: 40 g

C41131212



Flavor: Hazelnut
Packing: 24/6
Net Weight: 40 g

C41130915

RIVERZ WAFER



Flavor: Vanilla
Packing: 34/1
Net Weight: 100 g

C41130608



Flavor: Strawberry
Packing: 34/1
Net Weight: 100 g

C41130808



Flavor: Lemon
Packing: 34/1
Net Weight: 100 g

C41130708



Flavor: Chocolate
Packing: 34/1
Net Weight: 100 g

C41130508



MELTING FUSION



Milk Chocolate with Marshmallow

Flavor: Chocolate

Packing: 12/1

Net Weight: 140g

C35042602



Dimension (CTN): 390 x 155 x 235 mm

Pallet QTY (CTN): 150

CBM: 0.015

40'HQ (EURO): 3150

Pinkiz

Grissini Covered
With Milk Chocolate



C04042708



CLoudiz

Mini Biscuits Filled with Strawberry & Cocoa Flavoured Cream

Flavor: Chocolate & Strawberry
 Packing: 12/8
 Net Weight: 30 g



Dimension (CTN): 410 x 390 x 265 mm
 Pallet QTY (CTN): 45
 CBM: 0.042
 40'HQ (EURO/STD): 990/1134



C30130402



C30131402



C30130404



C30131404



C30130408



C30131408



C30130422



C30131422



CHIKO SURPRISE



Dimension (CTN): 340 x 248 x 345 mm

Pallet QTY (CTN): 50

CBM: 0.030

40'HQ (BULK): 2261

40'HQ (EURO/STD): 1250/1430



C14041202



C14041202

CHIKO SURPRISE

**Cocoa and Vanilla Cream
with Surprise Toys**

Display Box Packing: 24/4
Stand Packing: 128/1 Net Weight: 20g
Opened Dimension: 275x505x1215 mm
Closed Dimension: 275x505x510 mm



C14041302



C14042402



Dimension (CTN): 505 x 275 x 510 mm
Pallet QTY (CTN): 24
CBM: 0.071
40'HQ (BULK): 975
40'HQ (EURO/STD): 600/704



Soft & Hard Candy



Jelly Cup

Fruits Flavored Jelly

Flavor: Mixed Fruits
Packing: 25/6 Net Weight: 35g



C05011504

LOLLIBUZZ

FLAVORED SOUR LOLLIPOP

Flavor: Strawberry, Cola & Tutti Frutti
 Packing: 120/6 Net Weight: 7,25g

C400509M1



Flavored Sour Lollipop
 Dimension (CTN): 502 x 335 x 254 mm
 Pallet QTY (CTN): 36
 CBM: 0.043
 40'HQ (BULK): 1680
 40'HQ (EURO/STD): 900/138

LOLLIPOP STAND

Flavor: Strawberry, Orange & Cola
 Packing: 200/1 Net Weight: 16g

C290108M1



Flavor: Strawberry, Orange & Cola
 Packing: 100/1 Net Weight: 16g

C290114M1



Lollipop Stand 200pcs
 Dimension (CTN): 223 x 223 x 404 mm
 Pallet QTY (CTN): 82
 CBM: 0.021
 40'HQ (BULK): 3240
 40'HQ (EURO/STD): 2050/2420



GUMMIZ



Dimension (CTN): 360 x 477 x 185 mm
 Pallet QTY (CTN): 48
 CBM: 0.032
 40'HQ (BULK): 2198
 40'HQ (EURO/STD): 1200/1584



Fruit Flavoured Soft Candy

Flavor: Mixed Fruits
 Packing: 12/8 Net Weight: 70g

C30010402



C30000402



Fruit Flavoured Soft Candy

Flavor: Mixed Fruits
 Packing: 12/8 Net Weight: 70g

C30011702



Cola Flavoured Soft Candy

Flavor: Mixed Fruits
 Packing: 12/8 Net Weight: 70g

C30010502





Cola Flavoured Soft Candy

Flavor: Mixed Fruits

Packing: 12/8 Net Weight: 70g

C30010504



Fruit Flavoured Soft Candy

Flavor: Mixed Fruits

Packing: 12/8 Net Weight: 70g

C30010404





Fruit Flavoured Soft Candy

Flavor: Mixed Fruits
 Packing: 12/8 Net Weight: 70g

C30010408



Cola Flavoured Soft Candy

Flavor: Mixed Fruits
 Packing: 12/8 Net Weight: 70g

C30010508



Fruit Flavoured Soft Candy

Flavor: Mixed Fruits
 Packing: 12/8 Net Weight: 70g

C30011708



Fruit Flavoured Soft Candy

Flavor: Mixed Fruits
 Packing: 12/8 Net Weight: 70g



SPARKLES



Dimension (CTN): 485 x 210 x 280 mm
Pallet QTY (CTN): 56
CBM: 0.029
40'HQ (BULK): 2412
40'HQ (EURO/STD): 1400/1760



Fruit Flavoured Soft Candy

Flavor: Mixed Fruits

Packing: 12/8 **Net Weight:** 80g

C02011002



Fruit Flavoured Soft Candy

Flavor: Strawberry Fruits

Packing: 12/8 **Net Weight:** 80g

C02011102



Fruit Flavoured Soft Candy

Flavor: Mixed Fruits

Packing: 12/8 **Net Weight:** 80g

C02010902



**Candy
Toys**

MEGA SURPRISE EGG

10 Lollipops & Toys
 Flavor: Strawberry, Orange & Cola
 Packing: 18/1 Net Weight: 160g



Dimension (CTN): 520 x 352 x 762 mm
Pallet QTY (CTN): 12
CBM: 0.140
40'HQ (BULK): 510
40'HQ (EURO/STD): 275/396



C30020102



C30020115



C30020101



C30020112



C300201M1

ages
3+

SURPRISE CRYSTAL EGG

Lollipop & Toys

Flavor: Strawberry, Orange & Cola

Display Box Packing: 24/4 Stand Packing: 144/1
Net Weight: 16g



Stand

Dimension (CTN): 511 x 340 x 685 mm

Pallet QTY (CTN): 12

CBM: 0.120

40'HQ (BULK): 524

40'HQ (EURO/STD): 300/462



C30020502



C30020515



C30020504



C300203M1



C300205M1



C30020512



C30020501



Display

Dimension (CTN): 518 x 350 x 495 mm

Pallet QTY (CTN): 16

CBM: 0.090

40'HQ (BULK): 800

40'HQ (EURO/STD): 400/528

nickelodeon



DAIRY
FREE



GLUTEN
FREE



VEGAN
FRIENDLY



NO
ARTIFICIAL
COLOURS

45

JUMBO POP

LOLLIPOP WITH SURPRISE TOYS

Lollipop & Toys

Flavor: Strawberry, Orange & Cola
Stand Packing: 40/1 Net Weight: 16g
Stand Dimension: 360x320x920 mm

C30023002



JUMBO POP

LOLLIPOP WITH SURPRISE TOYS

Metal Stand

C30023902

Opened Dimension: 360x360x1750 mm



TWISTRUSH

3 Fruit Flavored Lollipop

Flavor: Mix Fruit

Display Box Packing: 6/8 Net Weight: 33g



C60022902



CANDY CUP

Flavor: Lemon, Strawberry, Orange & Banana
Packing: 8/2
Net Weight: 21g



C60022202



C60022204



mini MOVIE MAKER

Flavor: Lemon, Strawberry, Orange & Banana
 Packing: 12/6
 Net Weight: 6g



C60021802



**PRESS AND
DISCOVER
FUN LIGHT**

C60021804

TWINKLE FAN

Flavor: Lemon, Strawberry, Orange & Banana
Packing: 12/6
Net Weight: 10g



PRESS AND
FEEL THE
COOLNESS



C60021902





C60021904



INKREDIBLE

Flavor: Lemon, Strawberry, Orange & Banana
Packing: 12/12
Net Weight: 6g



C60022602





C60022604



CANDY VENDOR

Flavor: Lemon, Strawberry, Orange & Banana
Packing: 12/6
Net Weight: 15g



C60022302

YOU CAN TURN
IT FOR
DELICIOUS
CANDIES



C60022304



Kandiz CUP



HARD CANDY
&
GIFT INSIDE



Super Bowl



GIFT
INSIDE

KANDIZ BOX

Full Of Candies And Gifts



MONEY BOX

Fruit Flavoured Hard Candy and Gifts





Sour

SOUR & SPRAY



Sour & Spray Candy

Dimension (CTN): 410 x 400 x 445 mm

Pallet QTY (CTN): 30

CBM: 0.073

40'HQ (BULK): 900

40'HQ (EURO/STD): 750 / 660



C29050412



C29050404



C29050402



C29050401

Flavor: Cola, Raspberry & Strawberry

Packing: 16/8 Net Content: 105ml



C30051712



C30051704



C30051702



C30051701

Flavor: Cola, Raspberry & Strawberry

Packing: 20/6 Net Content: 40ml

Surprise **SOUR & SPRAY**

Flavor: Cola, Raspberry, Tutti Frutti & Strawberry
Packing: 20/6 Net Content: 40ml



**Sour & Spray Candy with
Surprise Toys**

Dimension (CTN): 556 x 236 x 335 mm

Pallet QTY (CTN): 42

CBM: 0.044

40'HQ (BULK): 1540

40'HQ (EURO/STD): 1050/1188



C30051001

C30051004

C30051002

C30051012



GALLO GUM

Flavor: Cotton Candy, Tutti Frutti & Strawberry
Packing: 18/8 Net Weight: 50g



Sour Chewing Powder Gum

Dimension (CTN): 410 x 270 x 385 mm

Pallet QTY (CTN): 39

CBM: 0.043

40'HQ (BULK): 1374

40'HQ (EURO/STD): 975 / 1078



C29050504



C29050502



C29050501



FLUFFY SOUR

Fluffy Sour Bag
Sour Soft Candy
Flavor: Strawberry
Packing: 12/6 Net Weight: 70g



Fluffy Sour Bag
Dimension (CTN): 600 x 260 x 380 mm
Pallet QTY (CTN): 36
CBM: 0.060
40'HQ (BULK): 1260
40'HQ (EURO/STD): 900/880



C09050104



C09051904

Fluffy Sour Bulk Display
Sour Soft Candy
Flavor: Strawberry
Packing: 150/8 Net Weight: 750g



Food & Beverage

PUDDING



Pink Cotton Candy Pudding

C28100802



Blue Cotton Candy Pudding

C28100702



Vanilla Pudding

C28100602



Chocolate Pudding

C28100502

SMOOTHIE



Mixed Berries Flavoured Smoothie



C28100102



Strawberry Flavoured Smoothie



C28100202

MAC N' CHEESE

Macaroni & Cheese
Display Box Packing: 24/1
Net Weight: 200g
Carton Dimension: 420x285x195 mm



C66120102*





MARGHERITA pizza

Margherita Pizza
Net Weight: 250g



C31110104



C31110102

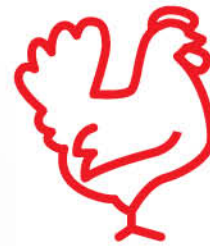
Frozen Pizza



DELI MEAT



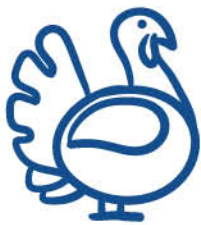
Chicken Breast



C27100902*



Turkey Breast



C27101002*

ICE POP



Flavor: Mango & Passion Fruit
Net Weight: 80ml



C65110302

C65110302



C65110604

Flavor: Lime
Net Weight: 80ml



C65110517

Flavor: Orange & Lime
Net Weight: 180ml

stands



Christmas Stand

C300003

Opened Dimension: 450 x 760 x 1750 mm



Gravity Stand

C300209

Stand Packing: 260 / 1

Net Weight: 16g

Opened Dimension: 632x632x1388 mm

Closed Dimension: 640x640x855 mm



Carton Mix Stand

C300001

Closed Dimension: 310 x 500 x 805 mm

stands



Metal Stand

C360606

Opened Dimension: 565x530x1830 mm



Sparkles & Gummiz Bowl Stand

D250607

Closed Dimension: 1090x45x770 mm

The Nickelodeon logo is displayed in white lowercase letters. It is positioned within a dark blue circular area that features a large, irregular orange splash shape behind the text.The KANDIZ logo is presented in a bold, orange, sans-serif font. The letters 'K', 'A', 'N', and 'D' are in all caps, while 'I' and 'Z' are in lowercase. A small 'TM' trademark symbol is located at the top right of the 'Z'. The logo is contained within a white rectangular box.

“Happiness”
in different
flavors



kandiz.com • follow us @kandiz.co

The SAI GROUP logo features the word 'SAI' in a bold, black, sans-serif font, followed by 'GROUP' in a lighter weight of the same font. A vertical line separates the two words. To the right of the logo is the website address 'www.saigroup.com.tr'.

©2024 All Rights Reserved. Kandiz, and all related titles, logos, and artworks are trademarks of SAI GROUP.

A vibrant green liquid splash graphic is located in the bottom left corner of the page, extending upwards and to the right. The splash has several droplets and a main body of liquid.

© 2024 Viacom International Inc. All Rights Reserved.